

EDGE

FORMING SYSTEMS



ACCURPRESS

EDGE



FRAME

The **EDGE** frame is built using only high quality mill certified steel. The welded construction provides the structural stability to ensure consistent performance with a minimum of forming interference and deflection.

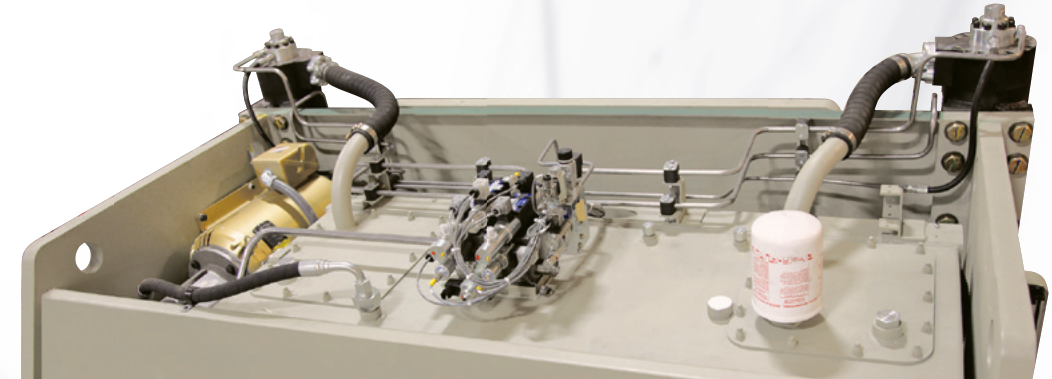
ADVANCED ELECTRONICS TECHNOLOGY

Simplified layout of the electrical cabinet allows for reduced wiring, easy maintenance & troubleshooting. Integrated Safety PLC provides reliable monitoring of all safety related functionality of the press brake.

FORMING VALUE

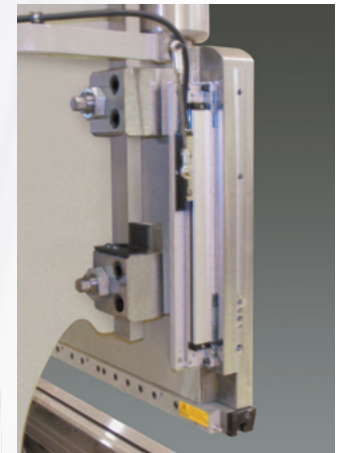
The **EDGE** is manufactured in North America with world-renowned components... offering reliable Y1/Y2 technology, high ram speeds, multiple axes backgauge functionality plus a number of optional accessories to accommodate high production operations.

DESIGNED FOR REPEAT ACCURACY



HYDRAULICS

The **EDGE** hydraulic system is specifically designed for synchronized Y1/Y2 press brakes. The easy access, low-noise system features an impressive rate of ram approach and return speeds - with ± 0.0004 " ram repeat and positional accuracies. The ram to bed parallelism is maintained independent of load and oil temperature.



LINEAR ENCODERS

Ram position is monitored and updated every two milliseconds (500 times per second) during the bend cycle. Linear encoders mounted independently from the frame provide real time ram positioning that is not affected by bending force.

PREMIUM BACKGAUGE



The Premium Backgauge modular design is available from 6' to 24' lengths. Maximum strength, high accuracy and exceptional durability is achieved through large section extrusion and roller carriage castings. The Premium gauge is easily upgradable to optional R, Z1/Z2, and Power X-Prime axes.

12' GAUGE SPECIFICATIONS

	X-Axis	R-Axis	Z1/Z2 Axis
Axis Travel	24" - 39" 609.6 - 990.6 mm	10" 254 mm	Distance between side frames minus 16"
Positioning Speed	900 ipm	900 ipm	5000 ipm
Position Repeatability	+/- 0.001"	+/- 0.001"	+/- 0.003"
Holding Force	750 lbs		

FORMING WITH VISION

VISION CONTROL

The new Vision control is ground-breaking and revolutionary control software system. Vision streamlines—and automates—press brake programming and operation unlike any other control.

There are three program modes in Vision; Flange, Position, and Profile which can all be accessed from the Home screen for the following tasks.

- **Flange Mode** allows for easy and accurate part programming.
- **Position Mode** automatically calculates precise positions, and allows for absolute control.
- **Profile** allows you to program multiple part profiles quickly and accurately.



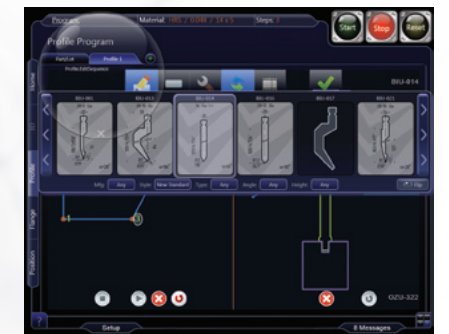
To see Vision in action, go to www.accupress.tv



Parts Info



Define Dimensions



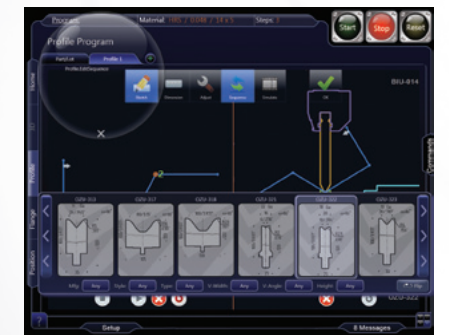
Choose Punch



Live Linked Calculator



Bending Sequence



Choose Die

ELITE BACKGAUGE

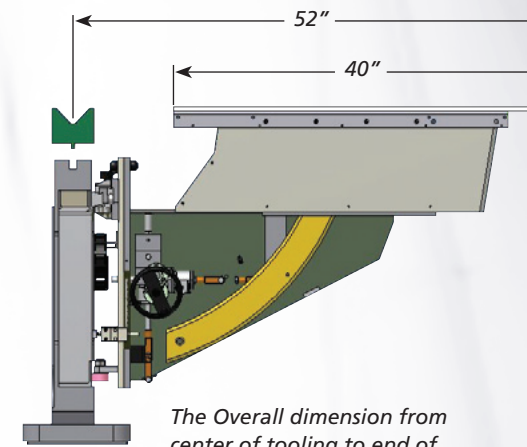


The Elite backgauge.....6-axes X1/X2, R1/R2, Z1/Z2.....offers additional versatility and functionality for the precision jobs looking for complete range of gauging motion. The precision fingers are machined with three gauging positions that provide a minimum of 39" (inches) of X-axis travel to the tip of the finger.

12' GAUGE SPECIFICATIONS

	X-Axis	R-Axis	Z1/Z2 Axis
Axis Travel	39" 812.8 mm	10" 254 mm	Distance between side frames minus 48"
Positioning Speed	900 ipm	900 ipm	900 ipm
Position Repeatability	+/- 0.001"	+/- 0.001"	+/- 0.003"
Holding Force	750 lbs		

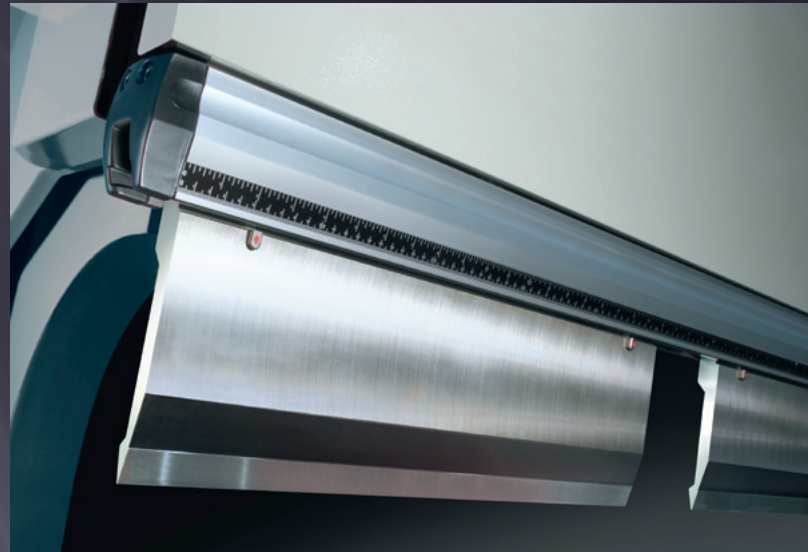
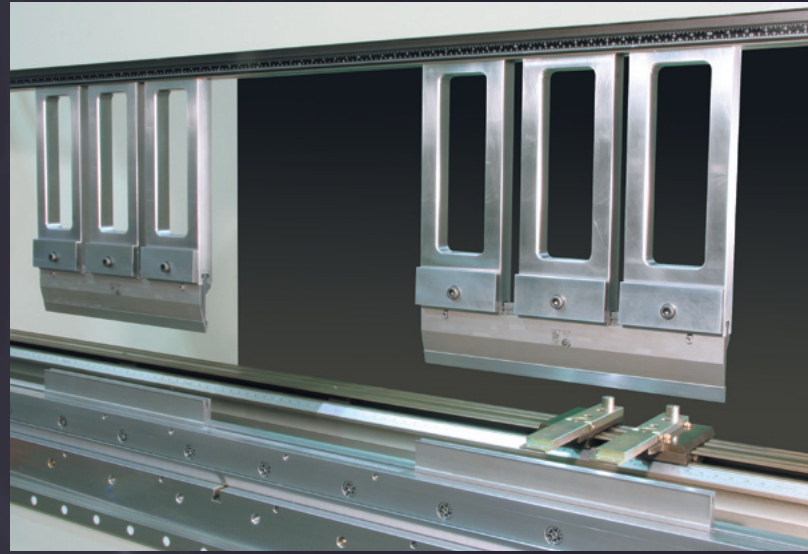
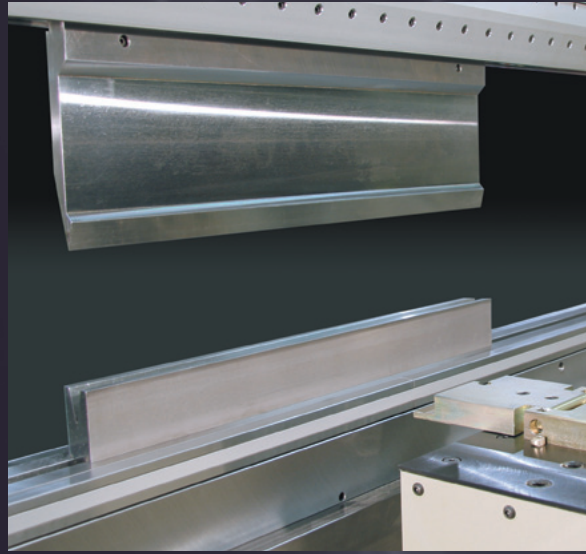
SHEET FOLLOWER SYSTEM



The Overall dimension from center of tooling to end of Extension Table may vary depending upon thickness of press brake bed.

The Sheet Following System follows material during the bend. The Sheet Follower table is fully synchronized with bend speed and bend angle. The descent speed is operator adjustable and the system can be activated by step.

Designed for using one or two units, the Sheet Follower is mounted on a linear bearing rail which is extended to accommodate parking when not being used. The Sheet Following System enhances operator productivity where parts are formed using long and heavy sheets.



Hydraulic Ram Clamping Systems



FORMING WITH PRECISION TOOLING



RAM CLAMPING & CROWNING SYSTEMS

EDGE press brakes, along with leading tooling system suppliers such as Wila products pictured opposite page, help increase the efficiency of sheet metal fabricators. Hydraulic ram clamping systems automatically clamp, seat, and align tools to maximize **EDGE** productivity. **EDGE** setup times are reduced by eliminating manual tightening of tools and manual die alignment. Crowning systems provide deflection compensation over the entire bed length of the machine. Crowning adjustment is made automatically using CNC powered motor or manual hand crank. Crowning systems with integrated hydraulic clamping reduce setup times and are easy to operate.

PRECISION TOOLING

Quick setups by automatically clamping and seating tools maximize **EDGE** productivity. Tooling is made from steel that has high tensile strength and load bearing capacity. Tools are ground with extremely high precision and tool radii are CNC deephardened to minimize wear and increase tool life. Segmented tooling provides the flexibility to form any length part. Tool segments are easy for operators to handle and can be vertically loaded on **EDGE**.



Lazersafe Guarding System shown on 75 ton, 6' Edge



OPERATOR GUARDING SYSTEMS

Accurpress offers a variety of effective solutions for operator safety, such as this Fiessler Light Curtain Guarding System, installed at the factory. Customers may choose the safe guarding system that is the best fit for their application and in keeping with government regulations for safe guarding press brakes.

Additional information pertaining to Guarding Systems is available at www.accurpress.com

FORMING PRODUCTIVITY AND SAFETY

Accurpress has qualified resources to assist customers with configuring the **EDGE** to match their forming needs. **EDGE** offers the productivity enhancing options for custom applications.



FRONT SHEET SUPPORT FIXTURES

Front Sheet Support Fixtures ride on a precision guide rail for easy left to right motion. Vertical movement is controlled by a hand wheel driven screw jack with no back drive for more precise positioning. The front sheet support also provides convenient built in protractor and squaring capability.



PROGRAMMABLE FOOTSWITCH

Dramatically improve productivity during operations that normally require operators to drag the footswitch down the length of the machine. The operator can program each step and use the footswitch that has been placed in a convenient location.



Primary and Secondary Footswitches

ADDITIONAL OPTIONS

Optional accessories are available to satisfy specific forming applications such as:

- Special machining requirements
- Additional ram open height
- Wider bed caps
- Extended throat depths
- Robotic systems interface



Rear Guarding is also available for the Edge Press Brake.

650 TON EDGE



THUNDER JET BOATS

This 650 ton x 26' bed length Accurpress Edge supports Thunder Jet Boats' core focus of building the best aluminum boats on the market. From the forming of intricate support structures to entire hull bottoms and sides, the Edge is a major asset to their operation.

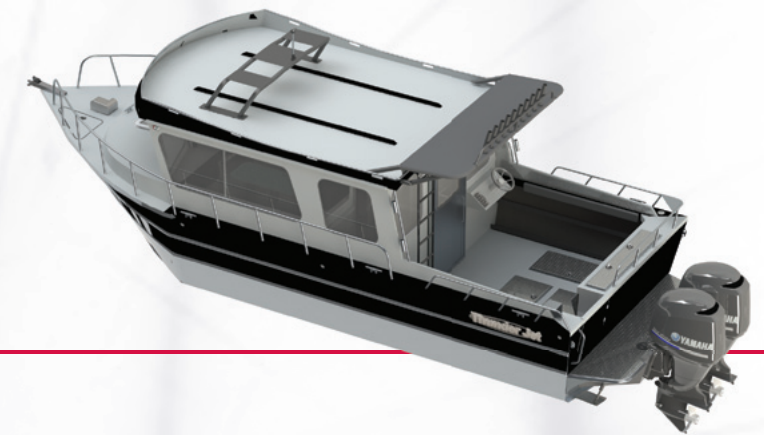
FORMING VALUE IN THE WATERCRAFT INDUSTRY

Thunder Jet Boats, located in Washington State, is the most advanced heavy gauge aluminum boat builder in North America. By utilizing and investing in the newest and best in equipment, people, and practices, Thunder Jet Boats are the highest quality, best finished, and best valued boats available today.

ALUMINIUM OUTBOARD AND JET BOAT MANUFACTURING

Thunder Jet's 650 ton Edge is a key asset in the ultra-competitive aluminum boat building and distribution sector. Its tonnage capacity, combined with its size, gives Thunder Jet the "Edge" by allowing them to form stiffeners in heavy gauge plate, thus improving strength and quality while at the same time reducing manufacturing times, material requirements and overall hull weight.

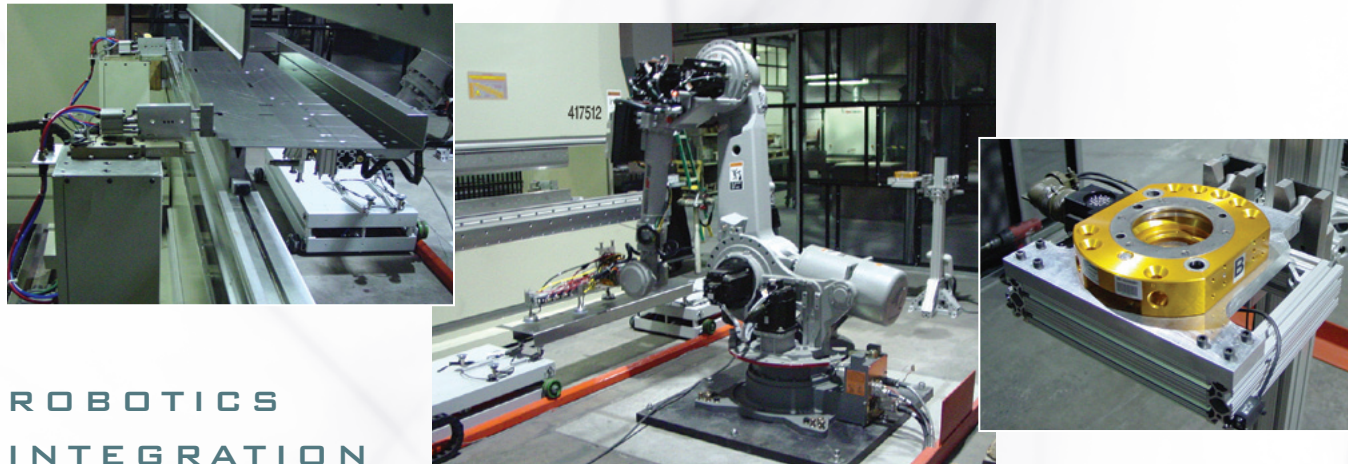
In a market that also experiences rapid change in commercial customer demand and design, the Edge's other key benefit is maintaining our ability to instantly react to new model requirements, while maintaining high throughput on our core 16' – 32' pleasure craft lineup.



TANDEM APPLICATIONS

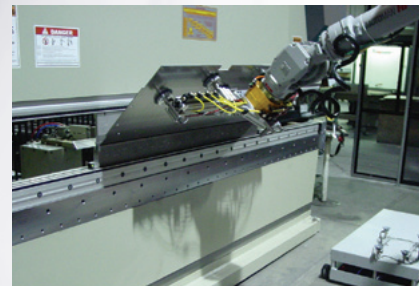
In tandem mode, two or more EDGE machines operate as one. In operation, the controllers are electronically coupled together to exchange information on set and actual positions, velocity, job steps and various key positions.

This flexible package offered by Accurpress provides the press brake operator the luxury of choosing single machine operation or tandem via a simple selector switch.



ROBOTICS INTEGRATION

Accurpress offers robotic press brake solutions for automated bending. Robotized bending combines the EDGE press brake with experienced partners in robotics and offline software, such as Motoman Solutions, to form complete automated bending cells.

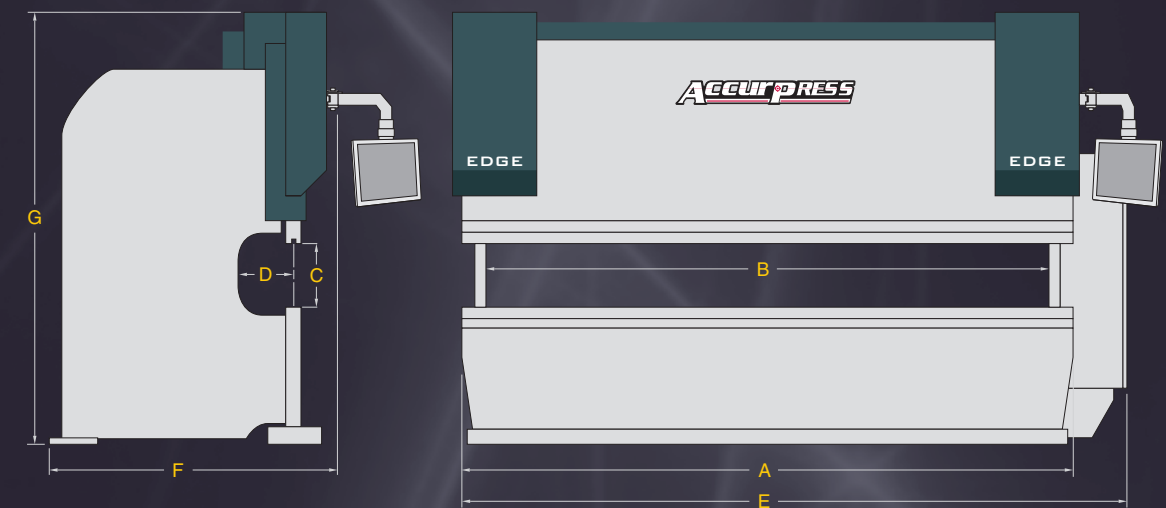


EDGE SPECIFICATIONS

MODEL NUMBER	TONS	A LENGTH OF BED (INCHES)	B DISTANCE BETWEEN FRAMES (INCHES)	BED HEIGHT (INCHES)	TOP BED WIDTH (INCHES)	C LENGTH OF RAM STROKE (INCHES)	RAM OPEN HEIGHT (INCHES)	RAM CLOSED HEIGHT (INCHES)	D THROAT DEPTH (INCHES)	E F G OVERALL DIMENSIONS			APPROX. SPEEDS			MOTOR HP	APPROX. SHIPPING WEIGHT (LB)
										LENGTH (INCHES)	DEPTH (INCHES)	HEIGHT (INCHES)	APPROACH SPEED (IN/MIN)	BEND SPEED (IN/MIN)	RETURN SPEED (IN/MIN)		
4756	75	72	54	34	3.25	9.5	17.5	8	10	77	60	92	440	24	320	10	9,000
4758	75	96	78	34	3.25	9.5	17.5	8	10	102	60	92	440	24	320	10	11,000
47510	75	120	102	34	3.25	9.5	17.5	8	10	124	60	92	440	24	320	10	13,000
41208	120	96	78	34	4.25	10	18	8	12	102	60	100	440	24	320	15	14,000
412010	120	120	102	34	4.25	10	18	8	12	124	60	100	440	24	320	15	16,000
412012	120	144	126	34	4.25	10	18	8	12	148	60	100	440	24	320	15	18,000
417510	175	120	102	34	6	10	18	8	12	124	63	102	320	24	280	20	19,000
417512	175	144	126	34	6	10	18	8	12	148	63	102	320	24	280	20	22,000
417514	175	168	148	34	6	10	18	8	12	174	63	102	320	24	280	20	24,000
425010	250	120	102	36	6	10	18	8	12	124	65	106	320	24	260	30	21,000
425012	250	144	126	36	6	10	18	8	12	150	65	106	320	24	260	30	25,000
425014	250	168	148	36	8	10	18	8	12	174	65	108	320	24	260	30	32,000
435012	350	144	126	38	10	12	20	8	14	156	76	122	320	24	260	40	33,000
435014	350	168	148	38	10	12	20	8	14	178	76	122	320	24	260	40	37,000
435016	350	192	172	38	14	12	20	8	14	204	76	122	320	24	260	40	41,000
450012	250	144	124	38	12	12	20	8	14	156	82	122	320	24	260	40	40,000
450014	500	168	146	38	14	12	20	8	14	178	82	122	320	24	260	40	45,000
◆ 450016	500	192	170	38	14	12	20	8	14	204	82	122	320	24	260	40	50,000
◆ 465016	650	192	170	38	14	14	22	8	18	206	82	135	320	24	260	60	85,000
◆ 465020	650	240	218	38	14	14	22	8	18	254	82	135	320	24	260	60	95,000
◆ 465024	650	288	266	38	14	14	22	8	18	302	82	145	320	24	260	60	108,000

◆ Model requires below floor lower bed.

Specifications are subject to change without notice.



Ram Open Height (C) is measured from the bottom of the ram tool holder to the top of the bed.

EDGE

FORMING SYSTEMS



SERVICE AND SUPPORT

ACCELL customer satisfaction is our priority. Comprehensive support is provided by the strongest service team in the industry. Distributor service technicians throughout the USA, Canada, and Mexico are located close to customers to reduce response time, maintain strong relationships, and keep machines operating productively.



★ Rapid City, SD - HEAD OFFICE
● Vancouver, BC
● Aberdeen, SD
● Wilmar, MN

ACCURPRESS

WWW.ACCURPRESS.COM

Accurpress America, 450 Concourse Drive, Rapid City, SD 57703
Tel: (605) 718-2550 Fax: (605) 718-2551

PRINTED DEC 2011

ACCURPRESS